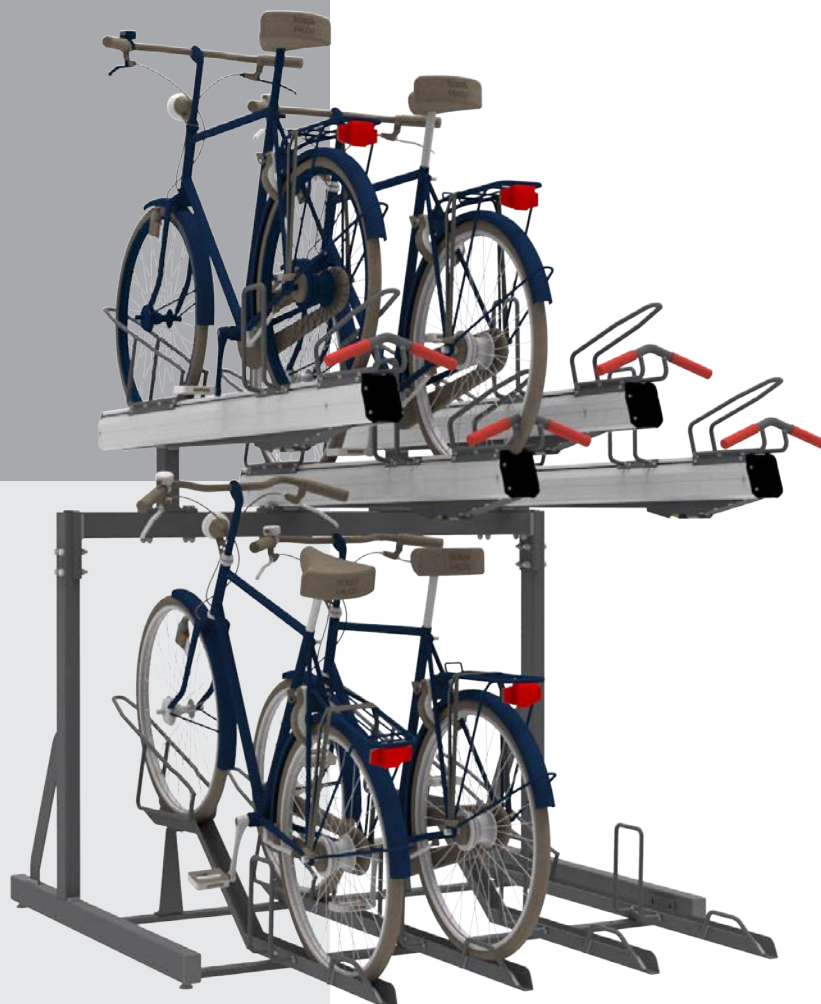


FALCO LEVEL PREMIUM+



FALCO LEVEL PREMIUM+

Go Dutch with the FalcoLevel Premium+ a gear change in usability and design. The FalcoLevel Premium+ is an innovative and user friendly cycle parking system which accommodates twice the number of bicycles compared to any other traditional cycle rack or stand.

The FalcoLevel Premium+ two-tier rack meets the Dutch national 'FietsParKeur' standard for secure cycle parking.

MODULAR DESIGN | Connect multiple units side by side for as long as required

TWO-TIER STORAGE SYSTEM | Accommodates twice as many cycles compared to any other traditional rack or stand

ALUMINIUM DESIGN | Creates a smoother and quieter user experience

FIETSPARKEUR | Meets the FietsParKeur Standard for Secure Cycle Parking

FALCOLEVEL PREMIUM+

Go Dutch with the FalcoLevel Premium+ a gear change in usability and design. The FalcoLevel Premium+ is an innovative and user friendly cycle parking system which accommodates twice the number of bicycles compared to any other traditional cycle rack or stand.

Manufactured from robust steel and aluminium, it creates a significant reduction in noise pollution, is smoother to operate and is just as easy to park a bike on the upper rack as the lower rack.

Features

Some key features of the FalcoLevel Premium+ arise from it's development cycle:

- The FalcoPremium+ has excellent build quality, typical of a Falco product.
- Utilises gas struts.
- Adjustable feet for uneven surfaces.
- Each space can be provided with a number, symbol or character upon request.
- A catch prevents the rack from sliding backwards.



Benefits

Compared to traditional two tier cycle parking systems, the new aluminium FalcoLevel Premium+ two tier cycle rack from Falco, has some distinct benefits over its cheaper rivals:

- Significant sound reduction from upper tier removing a large amount of noise pollution.
- Smoother action for the storage and retrieval of bikes.
- Just as easy to park a bicycle on the upper rack as the lower rack.
- Better suited for modern bikes with higher and wider handle bars.
- Connect multiple units side by side for as long as required.
- Available as a single or double sided version.
- Suitable for cycle tyres with a thickness of 27-50mm.
- Lighter to use than steel units making upper tier available to more cyclists.
- Ergonomic handgrip, with a thicker, warm to touch material that can be lifted with one or two hands.



- Lower lifting height (of the bike into the gutter).
- The roll in angle of the bike is less steep.
- Integrated floating feet for mounting on uneven surfaces.
- Modular design enables flexible c.t.c. bike spacing measurements.
- Stylish looking modern European design.
- Has multiple locking points for differing cycle designs.
- Robust welded construction for steel framework - hot dip galvanised to BS EN ISO 1461 and available in 192 RAL colours)



Locking points

FalcoLevel-Premium+ two-tier cycle rack has a locking system to secure the bike.



Optional

- Upright Cover Plate: An upright end cover plate can be supplied upon request for cycle parking areas unable to expand using standard add-on sections.
- Cycle Space Identification: Each cycle parking space can be allocated with a number or company logo or scheme to identify individual cycle parking spaces.

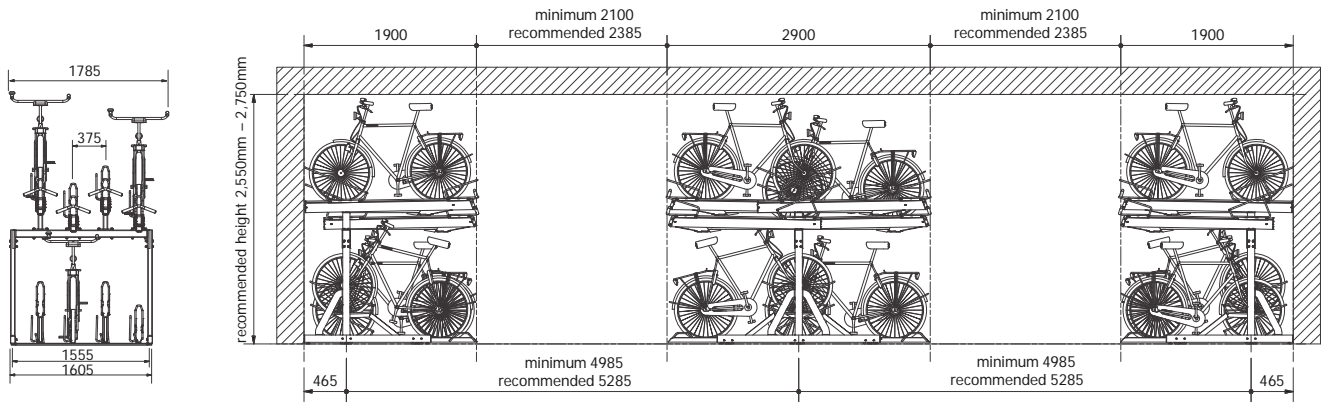


The FalcoLevel Premium+ is suitable for indoor or outdoor use. Falco also manufacture a range of single sided and double sided shelter and canopy structures ideal for sheltering the two-tier system.



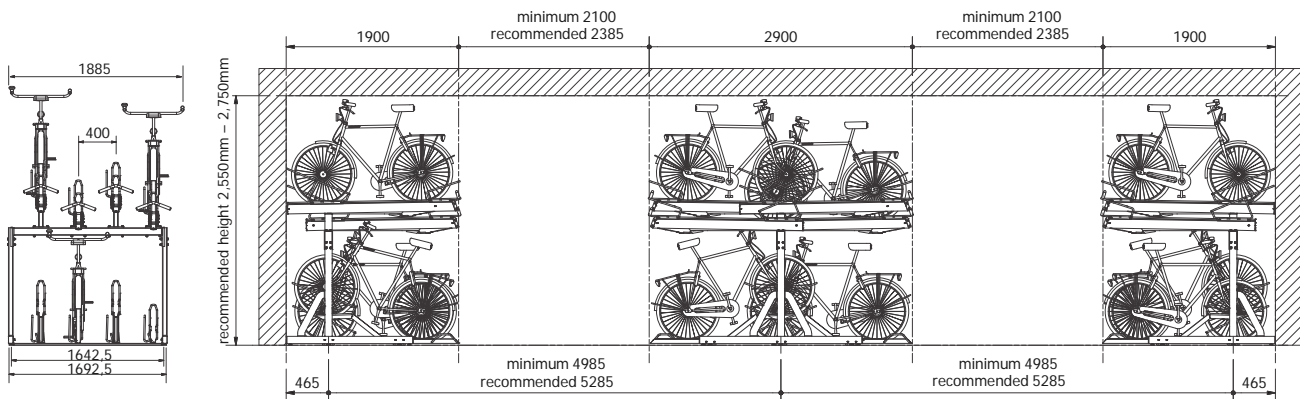
FALCOLEVEL PREMIUM+ 375 MM CENTRE-TO-CENTRE

Single Sided	Double Sided	Posts	Length mm		Single Sided	Double Sided	Posts	Length mm		Single Sided	Double Sided	Posts	Length mm	
			Single	Double				Single	Double				Single	Double
4	8	2	1035	1205	34	68	4	6770	6940	66	132	6	12880	13050
6	12	2	1410	1580	36	72	4	7145	7315	68	136	6	13255	13425
8	16	2	1785	1955	38	76	4	7520	7690	70	140	6	13630	13800
10	20	2	2160	2330	40	80	4	7895	8065	72	144	6	14005	14175
12	24	2	2535	2705	42	84	4	8270	8440	74	148	6	14380	14550
14	28	2	2910	3080	44	88	4	8645	8815	76	152	6	14755	14925
16	32	2	3285	3455	46	92	4	9020	9190	78	156	6	15130	15300
18	36	3	3715	3885	48	96	4	9395	9565	80	160	6	15505	15675
20	40	3	4090	4260	50	100	5	9825	9995	82	164	7	15935	16105
22	44	3	4465	4635	52	104	5	10200	10370	84	168	7	16310	16480
24	48	3	4840	5010	54	108	5	10575	10745	86	172	7	16685	16855
26	52	3	5215	5385	56	112	5	10950	11120	88	176	7	17060	17230
28	56	3	5590	5760	58	116	5	11325	11495	90	180	7	17435	17605
30	60	3	5965	6135	60	120	5	11700	11870	92	184	7	17810	17980
32	64	3	6340	6510	62	124	5	12075	12245	94	188	7	18185	18355
					64	128	5	12450	12620	96	192	7	18560	18730



FALCOLEVEL PREMIUM+ 400 MM CENTRE-TO-CENTRE

Single Sided	Double Sided	Posts	Length mm		Single Sided	Double Sided	Posts	Length mm		Single Sided	Double Sided	Posts	Length mm	
			Single	Double				Single	Double				Single	Double
4	8	2	1085	1255	34	68	4	7170	7340	66	132	6	13655	13825
6	12	2	1485	1655	36	72	4	7570	7740	68	136	6	14055	14225
8	16	2	1885	2055	38	76	4	7970	8140	70	140	6	14455	14625
10	20	2	2285	2455	40	80	4	8370	8540	72	144	6	14855	15025
12	24	2	2685	2855	42	84	4	8770	8940	74	148	6	15255	15425
14	28	2	3085	3255	44	88	4	9170	9340	76	152	6	15655	15825
16	32	2	3485	3655	46	92	4	9570	9740	78	156	6	16055	16225
18	36	3	3927,5	4097,5	48	96	4	9970	10140	80	160	6	16455	16625
20	40	3	4327,5	4497,5	50	100	5	10412,5	10582,5	82	164	7	16897,5	17067,5
22	44	3	4727,5	4897,5	52	104	5	10812,5	10982,5	84	168	7	17297,5	17467,5
24	48	3	5127,5	5297,5	54	108	5	11212,5	11382,5	86	172	7	17697,5	17867,5
26	52	3	5527,5	5697,5	56	112	5	11612,5	11782,5	88	176	7	18097,5	18267,5
28	56	3	5927,5	6097,5	58	116	5	12012,5	12182,5	90	180	7	18497,5	18667,5
30	60	3	6327,5	6497,5	60	120	5	12412,5	12582,5	92	184	7	18897,5	19067,5
32	64	3	6727,5	6897,5	62	124	5	12812,5	12982,5	94	188	7	19297,5	19467,5
					64	128	5	13212,5	13382,5	96	192	7	19697,5	19867,5





MAINTENANCE

Inspection of the FalcoLevel Premium+, to be carried out annually

- Check the operation of the complete system
- Inspect the mounting material
- Identify damage as a result of vandalism
- Inform the client
- Issue quotation for any parts to be replaced

Preventive maintenance, to be carried out periodically in consultation with the client

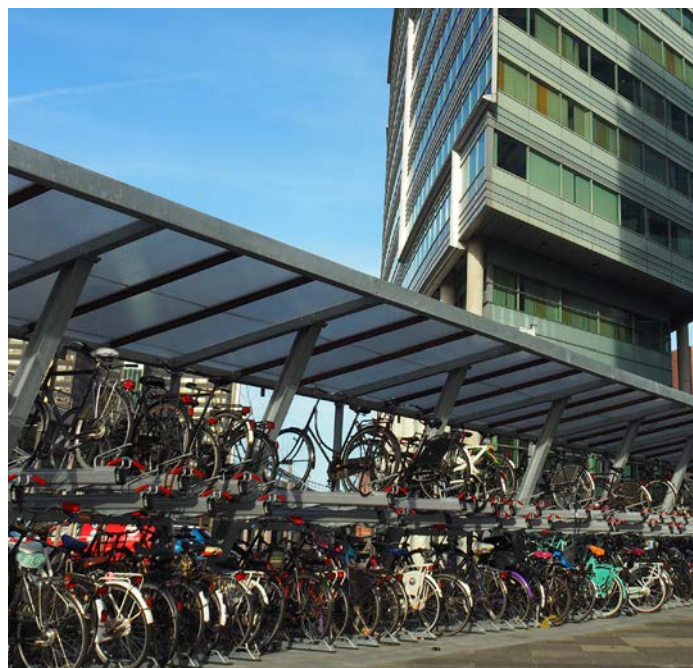
- Test the gas spring and the operation of the extension gutter
- Identify damage as a result of vandalism
- Inform the client
- Issue quotation for any parts to be replaced

Cleaning

- Clean upper and lower gutters (only the free bicycle spaces)
- Clean leaf and garbage residue from the lower rack (only the free bicycle spaces)
- Clean any coating
- Client must dispose of garbage which will be collected at a location to be specified by the client
- Water supply tap must be available, as well as a drain

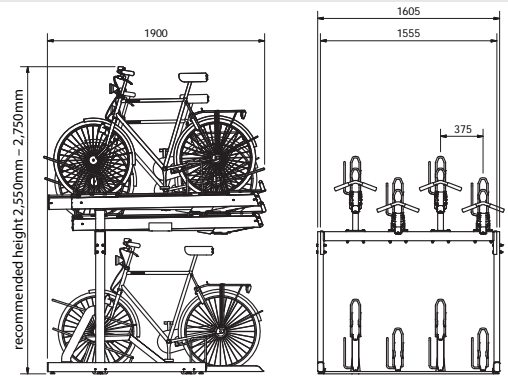
The above activities will only and exclusively be carried out in consultation with the client. After specifying a date, the client must ensure that the workspace is freely accessible and free from obstacles.

Replacement parts will be quoted for and are not included, nor are working hours that are accumulated due to not being able to carry out the maintenance activities or cleaning.



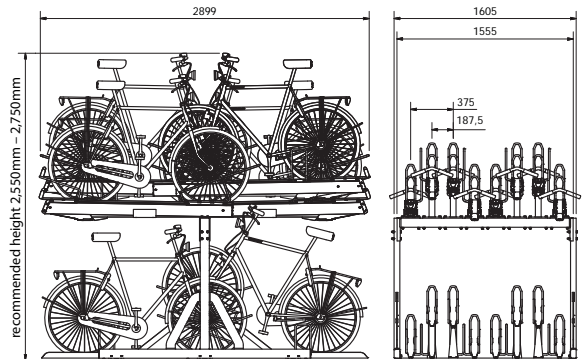
FALCOLEVEL PREMIUM+, SINGLE-SIDED

Description	Part Code
FalcoLevel Premium + cycle rack, single sided, 4 upper and 4 lower spaces to accommodate 8 bikes, upper racks fitted with gas struts, all spaces fitted with locking points, c.t.c 375mm, length 1,500mm	00.354.037EX
FalcoLevel Premium + cycle rack, single sided, 4 upper and 4 lower spaces to accommodate 8 bikes, upper racks fitted with gas struts, all spaces fitted with locking points, c.t.c 400mm, length 1,643mm	00.354.040EX
FalcoLevel Premium + cycle rack, single sided, 6 upper and 6 lower spaces to accommodate 12 bikes, upper racks fitted with gas struts, all spaces fitted with locking points, c.t.c 375mm, length 2,305mm	00.356.037EX
FalcoLevel Premium + cycle rack, single sided, 6 upper and 6 lower spaces to accommodate 12 bikes, upper racks fitted with gas struts, all spaces fitted with locking points, c.t.c 400mm, length 2,443mm	00.356.040EX



FALCOLEVEL PREMIUM+, DOUBLE-SIDED

Description	Part Code
FalcoLevel Premium + cycle rack, double sided, 8 upper and 8 lower spaces to accommodate 16 bikes, upper racks fitted with gas struts, all spaces fitted with locking points, c.t.c 187,5mm, length 1,555mm	00.368.018EX
FalcoLevel Premium + cycle rack, double sided, 8 upper and 8 lower spaces to accommodate 16 bikes, upper racks fitted with gas struts, all spaces fitted with locking points, c.t.c 200mm, length 1,643mm	00.368.020EX
FalcoLevel Premium + cycle rack, double sided, 10 upper and 10 lower spaces to accommodate 20 bikes, upper racks fitted with gas struts, all spaces fitted with locking points, c.t.c 187,5mm, length 1,888mm	00.370.018EX
FalcoLevel Premium + cycle rack, double sided, 10 upper and 10 lower spaces to accommodate 20 bikes, upper racks fitted with gas struts, all spaces fitted with locking points, c.t.c 200mm, length 2,043mm	00.370.020EX
FalcoLevel Premium + cycle rack, double sided, 12 upper and 12 lower spaces to accommodate 24 bikes, upper racks fitted with gas struts, all spaces fitted with locking points, c.t.c 187,5mm, length 2,305mm	00.372.018EX
FalcoLevel Premium + cycle rack, double sided, 12 upper and 12 lower spaces to accommodate 24 bikes, upper racks fitted with gas struts, all spaces fitted with locking points, c.t.c 200mm, length 2,443mm	00.372.020EX



FALCOLEVEL PREMIUM+, OPTIONAL

Description	Part Code
FalcoLevel Premium+ upright cover plate	OND00.350.310



HOW TO USE THE FALCOLEVEL PREMIUM+ TWO TIER CYCLE RACK

Parking a Bike

1. Grasp the handle and pull the upper rack fully outwards
2. Gently lower the rack to the floor

3. Place the front wheel of your bike onto the rack and wheel your bike along allowing the rear wheel to sit in the recess at the front

4. Using the handle gently raise the rack back into its upright position
5. Push the rack back until it locates over the 'stop' position

Removing a Parked Bike

1. Grasp the handle and pull the upper rack fully outwards
2. Gently lower the rack to the floor

3. Lift the rear bicycle wheel out of the rear support and roll the bicycle off the cycle rack

4. Grasp the handle and pull the rack back into its upright position
5. Push the rack back until it locates over the 'stop' position

